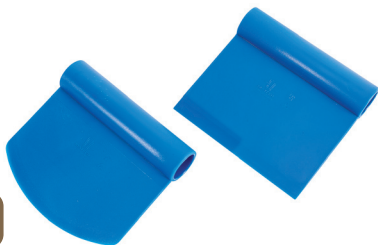




**DOUGH CUTTER**

Made of stainless steel with polyamide handle.

Item #		L"	W"	Wt oz.
112900	rigid blade straight cut	4 3/8	4 1/2	4
112901	rigid blade rounded cut	4 3/8	4 1/2	4
112902	flexible blade straight cut	4 3/8	4 1/2	4
112903	flexible blade rounded cut	4 3/8	4 1/2	4



**EXOGLASS® RIGID DOUGH CUTTER**

Made of an innovative composite material: non-deformable, non-stick, long lasting, dishwasher safe.

Item #		L"	W"	Wt oz.
112825	straight	4 1/2	3 1/8	2
112826	rounded	4 1/2	3 1/8	2



**EXOGLASS® ELVEA SCRAPER**

Made of an innovative composite material: non-deformable, non-stick, long lasting, dishwasher safe.

Item #	L"	W"	Wt oz.
112845	4 3/4	2 3/4	3

- Very resistant.
- Polyamide structure : exceptional robustness and durability.



LEARN MORE ABOUT THIS PRODUCT IN OUR CHEF LIFESTYLE BLOG.



**MATFER SCRAPER**

Multipurpose, scrapes just about everything.

Item #	L"	W"	Wt oz.
112840	4 3/4	3 3/4	1



**DOUGH SLICER**

Made of seamless stainless steel, with beveled edge. Rigid blade.

Item #	L"	W"	Wt oz.
112822	5 1/4	4 3/4	6



**PASTRY, CAKE, DESSERT FLOAT**

White ABS. Ideal for working with fondant icing.

Item #	L"	W"
421717	7	3 1/3